



Galvanized Flex Pipe

Constructed of hot dipped galvanized carbon steel strip for greater protection from weathering, the .019" thick galvanized flex pipes stand up in rough material conveying applications. Its high-temperature packing virtually eliminates air leaks and provides the highest capacity. For use with vacuum side only.



Galvanized / Stainless Steel Lined Flex Pipe

Constructed of hot dipped galvanized carbon steel strip and lined with 302 stainless steel, this flex measures .038" thick. It is designed to withstand the most grueling of applications. It features high-temperature packing and an Easyflo smooth bore for minimized grain damage, less friction loss and higher capacities, greater flex strength and longer service life.

Stainless Steel Flex Pipe

Tackle any application with ease with the most flexible and easy to handle metal flex. Completely constructed of 302 stainless steel, this flex is a contamination and corrosion deterrent and is more durable than standard galvanized flex pipe. Its high-temperature packing virtually eliminates air leaks and provides the highest capacities.



KEY

- AL = Aluminum
- COMP-B = Compression Coupler (Bolt Type)
- CSB = Carbon Steel Bell
- CSE = Carbon Steel Ends
- CUHD = Clean Up Head
- FCC = Female Camlock Coupler
- FLG = Flange



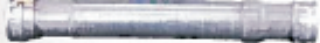



- GLV = Galvanized
- HAND = Handle
- HD = Heavy Duty
- MCC = Male Camlock Coupler
- RED = Reducer
- RHD = Rain Hood
- RUB = Rubber

- SKDS = Skids
- SS = Stainless Steel
- SWI = Swivel
- TDL = Tie Down
- WHLS = Wheels



- 1 Reducer w/Carbon Steel End (Stub)
- 2 Reducer w/Carbon Steel End (Stub) and Male Camlock Coupler
- 3 Seedcuff w/Male Camlock Coupler
- 4 Seedcuff
- 5 Carbon Steel End (Stub) with Female Camlock Coupler
- 6 Carbon Steel End (Stub)
- 7 Swivel Joint
- 8 Swivel Joint with Female Camlock Coupler

Flex Pipe Guide

 Flex Pipe, Flex Only	 Flex, CSE Flex, with Carbon Steel Ends	 Flex, CSE, MCC, FCC Flex w/Carbon Steel Ends, Male & Female Camlock Couplers
 Flex, CSE, SWI Flex, Carbon Steel Ends, Swivel	 Flex, CSE, RED, SWI, MCC, FCC Flex, Carbon Steel Ends, Reducer, Swivel, Male & Female Camlock Couplers	 Flex, CSE, SWI, MCC, FCC Flex, Carbon Steel Ends, Swivel, Male & Female Camlock Couplers

REDUCER ADAPTOR

REDUCER Carbon steel reducers provide smooth and easy transition from one line size to another. They are fitted with a variety of different ends to accommodate all types of pipe.



Reducer, Carbon Steel with Stub End

012145 Reducer, CS, 6" to 5" Stub



Reducer, Carbon Steel, Lg Female Camlock Coupler to Sm Male Camlock Coupler

01-A0027 Reducer, CS, 5" FCC to 4" MCC
01-A0028 Reducer, CS, 6" FCC to 5" MCC



Reducer, Carbon Steel Male Camlock Coupler

01-A0038 Reducer, CS, 4" to 5" MCC



Reducer, Carbon Steel, Lg Male Camlock Coupler to Sm Female Camlock Coupler

01-A0026 Reducer, CS, 5" MCC to 4" FCC
01-A0036 Reducer, CS, 6" MCC to 5" FCC



Reducer, Carbon Steel

01-A0072 Reducer, CS, 5" to 4"
037308 Reducer, CS, 6" to 4"
01-E0050 Reducer, CS, 6" to 5"



Reducer, Carbon Steel, with Male Camlock Coupler

01-A0043 Reducer, CS, 6" to 5" MCC
01-A0441 Reducer, CS, 8" to 6" MCC
(Commonly Used on 680, 6068 Airlock)

ADAPTORS



Adaptor, Stub, Carbon Steel End

01-A0254 Adaptor, Stub, 4"
01-A0202 Adaptor, Stub, 5"
01-A0255 Adaptor, Stub, 6"



Adaptor, Seedcuff

02-80343 Adaptor, Seedcuff, 5"
01-A0009 Adaptor, Seedcuff, 6"



Adaptor, Stub, w/Female Camlock Coupler
Used on Metal and Rubber Flex

01-A0068 Adaptor, Stub, 4" w/FCC
01-A0256 Adaptor, Stub, 5" w/FCC
01-A0080 Adaptor, Stub, 6" w/FCC



Adaptor, Seedcuff w/Male Camlock Coupler
Used on Metal Flex

01-A0018 Adaptor, Seedcuff, 5" w/MCC
01-A0090 Adaptor, Seedcuff, 6" w/MCC



Adaptor, Stub, w/Male Camlock Coupler
Used on Rubber Flex

01-A0069 Adaptor, Stub, 4" w/MCC
01-A0257 Adaptor, Stub, 5" w/MCC
01-A0414 Adaptor, Stub, 6" w/MCC

SWIVEL JOINTS



01-A0194 4" Swivel Joint
01-A0402 5" Swivel Joint



013808 4" Swivel Joint, Stub, FCC
01-A0444 5" Swivel Joint, Stub, FCC



011648 4" Swivel Joint, Stub, MCC
011649 5" Swivel Joint, Stub, MCC



Agri Distributing Inc.

Unless specified, all elbows are steel grit blasted, primed, and painted with agricultural green paint.



Elbow with Quick Couplers

- 01-A0226 Elbow, CS, 4" x 90° x 48", 11GA, MCC, FCC
- 10-4114 Elbow, CS, 5" x 90° x 36", 11GA, MCC, FCC
- 01-A0230 Elbow, CS, 5" x 90° x 48", 11GA, MCC, FCC
- 01-A0234 Elbow, CS, 6" x 90° x 48", 11GA, MCC, FCC

30° Elbows

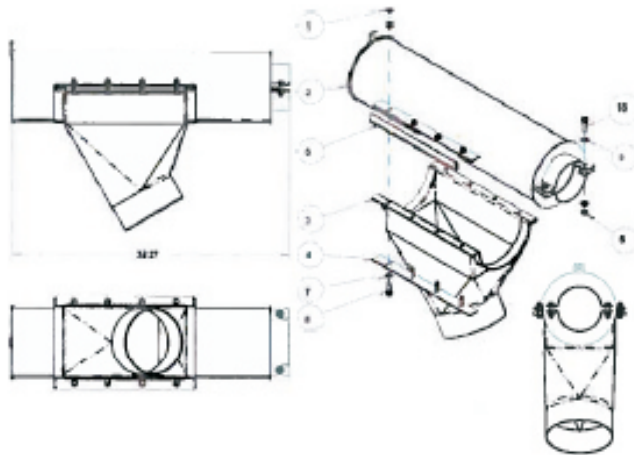
- 01-A0211 Elbow, CS, 4" x 30° x 48", 11GA
- 01-A0215 Elbow, CS, 5" x 30° x 48", 11GA
- 01-A0219 Elbow, CS, 6" x 30° x 48", 11GA

60° Elbows

- 01-A0213 Elbow, CS, 4" x 60° x 48", 11GA
- 01-A0217 Elbow, CS, 5" x 60° x 48", 11GA
- 01-A0221 Elbow, CS, 6" x 60° x 48", 11GA

90° Elbows

- 01-A0214 Elbow, CS, 4" x 90° x 48", 11GA
- 01-A0218 Elbow, CS, 5" x 90° x 48", 11GA
- 73-4098 Elbow, CS, 5" x 90° x 36", 11GA
- 01-A0222 Elbow, CS, 6" x 90° x 48", 11GA



Cyclones and Misc Accessories

- 039181 Cyclone, Bin, 20", 4" w/Rainhood, Tie-down & Outlet Flange
- 039182 Cyclone, Bin, 20", 5" w/Rainhood, Tie-down & Outlet Flange
- 039183 Cyclone, Bin, 20", 6" w/Rainhood, Tie-down & Outlet Flange
- 039052 Dead Head Deflector 60 Degree 4"
- 038942 Dead Head Deflector 60 Degree 5"
- 039051 Dead Head Deflector 60 Degree 6"



Bin Brackets

- 01-B0026 Bracket, Bin Mount, Compression Coupler (4", 5", 6")
- 038935 Tri-Pod Mount BKT 4"
- 038936 Tri-Pod Mount BKT 5"
- 038937 Tri-Pod Mount BKT 6"
- 039025 Bi-Pod Bracket, Adjustable Tube Support 4"
- 039026 Bi-Pod Bracket, Adjustable Tube Support 5"
- 039027 Bi-Pod Bracket, Adjustable Tube Support 6"



FLEX PIPE



REPLACEMENT FLEX - FLEX ONLY, NO ENDS



Galvanized Flex

- 01-A0093 Flex, GLV, 4" x 14' (Flex Only)
- 01-A0100 Flex, GLV, 5" x 14' (Flex Only)
- 01-A0422 Flex, GLV, 5" x 25' (Flex Only)
- 01-A0011 Flex, GLV, 6" x 14' (Flex Only)
- 01-A0423 Flex, GLV, 6" x 25' (Flex Only)

Stainless Steel Flex

- 01-A0277 Flex, SS, 4" x 15' (Flex Only)
- 01-A0280 Flex, SS, 5" x 15' (Flex Only)
- 01-A0283 Flex, SS, 6" x 15' (Flex Only)

FLEX - CARBON STEEL ENDS, NO COUPLERS



Galvanized Flex

- 01-A0162 Flex, GLV, 4" x 16', CSE
- 01-A0163 Flex, GLV, 5" x 16', CSE
- 01-A0160 Flex, GLV, 6" x 16', CSE

Stainless Steel Flex

- 01-A0326 Flex, SS, 4" x 17', CSE
- 01-A0330 Flex, SS, 5" x 17', CSE
- 01-A0334 Flex, SS, 6" x 16', CSE

FLEX - CARBON STEEL ENDS, MALE & FEMALE CAMLOCK COUPLERS



Galvanized Flex

- 01-A0164 Flex, GLV, 4" x 16', CSE, MCC, FCC
- 01-A0165 Flex, GLV, 5" x 16', CSE, MCC, FCC
- 029791 Flex, GLV, 5" x 27', CSE, MCC, FCC
- 01-A0161 Flex, GLV, 6" x 16', CSE, MCC, FCC

Stainless Steel Flex

- 01-A0338 Flex, SS, 4" x 17', CSE, MCC, FCC
- 01-A0342 Flex, SS, 5" x 17', CSE, MCC, FCC
- 01-A0346 Flex, SS, 6" x 17', CSE, MCC, FCC

- 01-A0338 Flex, SS, 4" x 17', CSE, MCC, FCC
- 01-A0342 Flex, SS, 5" x 17', CSE, MCC, FCC
- 01-A0346 Flex, SS, 6" x 17', CSE, MCC, FCC

Galvanized Stainless Steel Lined

- 01-A0091 Flex, GLV/SS Lined, 4" x 4' (Flex Only - 26")
- 01-A0081 Flex, GLV/SS Lined, 4" x 6' (Flex Only - 60")
- 01-A0092 Flex, GLV/SS Lined, 4" x 10' (Flex Only - 100")
- 01-A0168 Flex, GLV/SS Lined, 4" x 14' (Flex Only - 12.5')

- 01-A0098 Flex, GLV/SS Lined, 5" x 4' (Flex Only - 26")
- 01-C0139 Flex, GLV/SS Lined, 5" x 6' (Flex Only - 60")
- 01-A0099 Flex, GLV/SS Lined, 5" x 10' (Flex Only - 100")
- 01-A0169 Flex, GLV/SS Lined, 5" x 14' (Flex Only - 12.5')

- 025970 Flex, GLV/SS Lined, 5" x 20' (Flex Only - 20')
- 01-A0101 Flex, GLV/SS Lined, 5" x 25' (Flex Only - 25')

- 01-A0012 Flex, GLV/SS Lined, 6" x 4' (Flex Only - 26")
- 01-A0458 Flex, GLV/SS Lined, 6" x 6' (Flex Only - 60")
- 01-A0171 Flex, GLV/SS Lined, 6" x 10' (Flex Only - 100")
- 01-A0172 Flex, GLV/SS Lined, 6" x 14' (Flex Only - 12.5')
- 01-A0418 Flex, GLV/SS Lined, 6" x 25' (Flex Only - 25')

Galvanized Stainless Steel Lined

- 01-A0137 Flex, GLV/SS Lined, 4" x 6', CSE
- 01-A0138 Flex, GLV/SS Lined, 4" x 10', CSE
- 01-A0139 Flex, GLV/SS Lined, 4" x 14', CSE

- 01-A0140 Flex, GLV/SS Lined, 5" x 4', CSE
- 01-A0141 Flex, GLV/SS Lined, 5" x 6', CSE
- 01-A0142 Flex, GLV/SS Lined, 5" x 10', CSE
- 01-A0143 Flex, GLV/SS Lined, 5" x 14', CSE
- 025971 Flex, GLV/SS Lined, 5" x 20', CSE

- 01-A0145 Flex, GLV/SS Lined, 6" x 4', CSE
- 01-A0457 Flex, GLV/SS Lined, 6" x 6', CSE
- 01-A0146 Flex, GLV/SS Lined, 6" x 10', CSE
- 01-A0147 Flex, GLV/SS Lined, 6" x 14', CSE

Galvanized Stainless Steel Lined

- 01-A0148 Flex, GLV/SS Lined, 4" x 4', CSE, MCC, FCC
- 01-A0149 Flex, GLV/SS Lined, 4" x 6', CSE, MCC, FCC
- 01-A0150 Flex, GLV/SS Lined, 4" x 10', CSE, MCC, FCC
- 01-A0151 Flex, GLV/SS Lined, 4" x 14', CSE, MCC, FCC

- 01-A0152 Flex, GLV/SS Lined, 5" x 4', CSE, MCC, FCC
- 01-A0153 Flex, GLV/SS Lined, 5" x 6', CSE, MCC, FCC
- 01-A0154 Flex, GLV/SS Lined, 5" x 10', CSE, MCC, FCC
- 01-A0155 Flex, GLV/SS Lined, 5" x 14', CSE, MCC, FCC
- 025972 Flex, GLV/SS Lined, 5" x 20', CSE, MCC, FCC

- 01-A0157 Flex, GLV/SS Lined, 6" x 4', CSE, MCC, FCC
- 01-A0156 Flex, GLV/SS Lined, 6" x 6', CSE, MCC, FCC
- 01-A0158 Flex, GLV/SS Lined, 6" x 10', CSE, MCC, FCC
- 01-A0159 Flex, GLV/SS Lined, 6" x 14', CSE, MCC, FCC



Agri Distributing Inc.



Rubber flex is recommended for use in cleanup applications only

Rubber compounded to dissipate static and constructed with rigid PVC helix, the rubber flex pipes are safe and durable during cleanup.

Flex, Rubber, Flex Only, Standard Duty



- 01-A0286 Flex, RUB, 4" x 15', Flex Only
- 01-A0287 Flex, RUB, 4" x 20', Flex Only
- 030023 Flex, RUB, 4" x 25', Flex Only
- 01-A0435 Flex, RUB, 5" x 15', Flex Only
- 01-A0074 Flex, RUB, 5" x 20', Flex Only
- 029053 Flex, RUB, 5" x 25', Flex Only
- 94-4125-1 Flex, RUB, 6" x 15', Flex Only
- 025208 Flex, RUB, 6" x 20', Flex Only
- 027484 Flex, RUB, 6" x 25', Flex Only

Specialty Ends include reducers and/or swivel ends



Flex, Rubber, Carbon Steel Ends, Reducer, Swivel, Male & Female Camlock Couplers

- 01-A0250 Flex, RUB, 4" x 16', CSE, 5-4 RED, SWI, MCC, FCC
- 083115 Flex, RUB, 5" x 17', CSE, 6-5 RED, SWI, MCC, FCC Orange/Black

Flex, Rubber, Carbon Steel Ends, Male & Female Camlock Couplers, Standard Duty



- 01-A0262 Flex, RUB, 4" x 16', CSE, MCC, FCC
- 036272 Flex, RUB, 4" x 20', CSE, MCC, FCC
- 01-A0130 Flex, RUB, 5" x 16', CSE, MCC, FCC
- 030123 Flex, RUB, 5" x 25', CSE, FCC, MCC
- 10-4162 Flex, RUB, 6" x 16', CSE, MCC, FCC
- 025210 Flex, RUB, 6" x 20', CSE, MCC, FCC



Flex, Rubber, Carbon Steel Ends, Swivel, Male & Female Camlock Couplers

- 01-A0386 Flex, RUB, 4" x 16', CSE, SWI, MCC, FCC
- 01-A0387 Flex, RUB, 4" x 22', CSE, SWI, MCC, FCC
- 01-A0251 Flex, RUB, 5" x 16', CSE, SWI, MCC, FCC
- 029223 Flex, RUB, 5" x 22', CSE, SWI, MCC, FCC
- 083114 Flex, RUB, 5" x 17', CSE, SWI, MCC, FCC, Orange/Black,



Flex, Rubber, Flex Only, Medium Duty

- 083052 Flex, RUB, 5" x 15', Orange/Black, Flex Only
- 083054 Flex, RUB, 6" x 15', Orange/Black, Flex Only



Flex, Rubber, Carbon Steel Ends, Male & Female Camlock Couplers, Medium Duty

- 083053 Flex, RUB, 5" x 17', Orange/Black, CSE, MCC, FCC
- 083055 Flex, RUB, 6" x 15', Orange/Black, CSE, MCC, FCC



Flex, Rubber, Carbon Steel Ends, 5" to 4" Reducer, Male & Female Camlock Couplers, Standard Duty

- 01-A0424 Flex, RUB, 4" x 16', CSE, 5-4 RED, MCC, FCC



Heavy-duty aluminum pipe has an excellent service life, but is still lightweight and easy to handle. Purchase with camlock couplers for the easiest pipe connection.

4" .072" Wall Thickness

5" .078" Wall Thickness

6" .083" Wall Thickness

Aluminum Straight Pipe



026412	Pipe, Straight, AL, 2" x 20'
029048	Pipe, Straight, AL, 3" x 20'
01-A0106	Pipe, Straight, AL, 4" x 5'
01-A0107	Pipe, Straight, AL, 4" x 10'
01-A0108	Pipe, Straight, AL, 4" x 15'
01-A0109	Pipe, Straight, AL, 4" x 20'
02-80215	Pipe, Straight, AL, 5" x 5'
02-80216	Pipe, Straight, AL, 5" x 10'
02-80217	Pipe, Straight, AL, 5" x 15'
02-80218	Pipe, Straight, AL, 5" x 20'
01-A0116	Pipe, Straight, AL, 6" x 5'
01-A0117	Pipe, Straight, AL, 6" x 10'
01-A0166	Pipe, Straight, AL, 6" x 15'
01-A0167	Pipe, Straight, AL, 6" x 20'
029356	Pipe, Straight, AL, 7" x 10'

01-A0048	Pipe, Straight, AL, 4" x 5', MCC, FCC
01-A0049	Pipe, Straight, AL, 4" x 10', MCC, FCC
01-A0053	Pipe, Straight, AL, 4" x 15', MCC, FCC
01-A0054	Pipe, Straight, AL, 4" x 20', MCC, FCC
02-80211	Pipe, Straight, AL, 5" x 5', MCC, FCC
02-80212	Pipe, Straight, AL, 5" x 10', MCC, FCC
02-80213	Pipe, Straight, AL, 5" x 15', MCC, FCC
02-80214	Pipe, Straight, AL, 5" x 20', MCC, FCC
01-A0056	Pipe, Straight, AL, 6" x 5', MCC, FCC
01-A0057	Pipe, Straight, AL, 6" x 10', MCC, FCC
01-A0058	Pipe, Straight, AL, 6" x 15', MCC, FCC
01-A0059	Pipe, Straight, AL, 6" x 20', MCC, FCC
01-A0551	Pipe, Straight, AL, 8" x 4', MCC, FCC
01-A0538	Pipe, Straight, AL, 8" x 7', MCC, FCC

Telescoping Aluminum Straight Pipe



01-C0510	Pipe, TELE, 5" x 5'-10', MCC, FCC
01-C0514	Pipe, TELE, 5" x 10'-20', MCC, FCC
01-C0520	Pipe, TELE, 6" x 5'-10', MCC, FCC
01-C0521	Pipe, TELE, 6" x 10'-20', MCC, FCC



Eliminate the tedious process of adding and taking off pipe during unloading. The telescoping aluminum straight pipe simply adjusts to the perfect length. Save time and eliminate hassles. The straight pipe design virtually eliminated pipe wear, minimized grain damage and features a leakproof telescoping seal for maximum capacity.



Agri Distributing Inc.



Rubber flex is recommended for use in cleanup applications only

Rubber compounded to dissipate static and constructed with rigid PVC helix, the rubber flex pipes are safe and durable during cleanup.

Flex, Rubber, Flex Only, Standard Duty



- 01-A0286 Flex, RUB, 4" x 15', Flex Only
- 01-A0287 Flex, RUB, 4" x 20', Flex Only
- 030023 Flex, RUB, 4" x 25', Flex Only
- 01-A0435 Flex, RUB, 5" x 15', Flex Only
- 01-A0074 Flex, RUB, 5" x 20', Flex Only
- 029053 Flex, RUB, 5" x 25', Flex Only
- 94-4125-1 Flex, RUB, 6" x 15', Flex Only
- 025208 Flex, RUB, 6" x 20', Flex Only
- 027484 Flex, RUB, 6" x 25', Flex Only

Specialty Ends include reducers and/or swivel ends



Flex, Rubber, Carbon Steel Ends, Reducer, Swivel, Male & Female Camlock Couplers

- 01-A0250 Flex, RUB, 4" x 16', CSE, 5-4 RED, SWI, MCC, FCC
- 083115 Flex, RUB, 5" x 17', CSE, 6-5 RED, SWI, MCC, FCC Orange/Black



Flex, Rubber, Carbon Steel Ends, Male & Female Camlock Couplers, Standard Duty

- 01-A0262 Flex, RUB, 4" x 16', CSE, MCC, FCC
- 036272 Flex, RUB, 4" x 20', CSE, MCC, FCC
- 01-A0130 Flex, RUB, 5" x 16', CSE, MCC, FCC
- 030123 Flex, RUB, 5" x 25', CSE, FCC, MCC
- 10-4162 Flex, RUB, 6" x 16', CSE, MCC, FCC
- 025210 Flex, RUB, 6" x 20', CSE, MCC, FCC



Flex, Rubber, Carbon Steel Ends, Swivel, Male & Female Camlock Couplers

- 01-A0386 Flex, RUB, 4" x 16', CSE, SWI, MCC, FCC
- 01-A0387 Flex, RUB, 4" x 22', CSE, SWI, MCC, FCC
- 01-A0251 Flex, RUB, 5" x 16', CSE, SWI, MCC, FCC
- 029223 Flex, RUB, 5" x 22', CSE, SWI, MCC, FCC
- 083114 Flex, RUB, 5" x 17', CSE, SWI, MCC, FCC, Orange/Black,



Flex, Rubber, Flex Only, Medium Duty

- 083052 Flex, RUB, 5" x 15', Orange/Black, Flex Only
- 083054 Flex, RUB, 6" x 15', Orange/Black, Flex Only



Flex, Rubber, Carbon Steel Ends, Male & Female Camlock Couplers, Medium Duty

- 083053 Flex, RUB, 5" x 17', Orange/Black, CSE, MCC, FCC
- 083055 Flex, RUB, 6" x 15', Orange/Black, CSE, MCC, FCC



Flex, Rubber, Carbon Steel Ends, 5" to 4" Reducer, Male & Female Camlock Couplers, Standard Duty

- 01-A0424 Flex, RUB, 4" x 16', CSE, 5-4 RED, MCC, FCC



Heavy-duty aluminum pipe has an excellent service life, but is still lightweight and easy to handle. Purchase with camlock couplers for the easiest pipe connection.

4" .072" Wall Thickness

5" .078" Wall Thickness

6" .083" Wall Thickness

Aluminum Straight Pipe



026412	Pipe, Straight, AL, 2" x 20'
029048	Pipe, Straight, AL, 3" x 20'
01-A0106	Pipe, Straight, AL, 4" x 5'
01-A0107	Pipe, Straight, AL, 4" x 10'
01-A0108	Pipe, Straight, AL, 4" x 15'
01-A0109	Pipe, Straight, AL, 4" x 20'
02-80215	Pipe, Straight, AL, 5" x 5'
02-80216	Pipe, Straight, AL, 5" x 10'
02-80217	Pipe, Straight, AL, 5" x 15'
02-80218	Pipe, Straight, AL, 5" x 20'
01-A0116	Pipe, Straight, AL, 6" x 5'
01-A0117	Pipe, Straight, AL, 6" x 10'
01-A0166	Pipe, Straight, AL, 6" x 15'
01-A0167	Pipe, Straight, AL, 6" x 20'
029356	Pipe, Straight, AL, 7" x 10'

01-A0048	Pipe, Straight, AL, 4" x 5', MCC, FCC
01-A0049	Pipe, Straight, AL, 4" x 10', MCC, FCC
01-A0053	Pipe, Straight, AL, 4" x 15', MCC, FCC
01-A0054	Pipe, Straight, AL, 4" x 20', MCC, FCC
02-80211	Pipe, Straight, AL, 5" x 5', MCC, FCC
02-80212	Pipe, Straight, AL, 5" x 10', MCC, FCC
02-80213	Pipe, Straight, AL, 5" x 15', MCC, FCC
02-80214	Pipe, Straight, AL, 5" x 20', MCC, FCC
01-A0056	Pipe, Straight, AL, 6" x 5', MCC, FCC
01-A0057	Pipe, Straight, AL, 6" x 10', MCC, FCC
01-A0058	Pipe, Straight, AL, 6" x 15', MCC, FCC
01-A0059	Pipe, Straight, AL, 6" x 20', MCC, FCC
01-A0551	Pipe, Straight, AL, 8" x 4', MCC, FCC
01-A0538	Pipe, Straight, AL, 8" x 7', MCC, FCC

Telescoping Aluminum Straight Pipe



01-C0510	Pipe, TELE, 5" x 5'-10', MCC, FCC
01-C0514	Pipe, TELE, 5" x 10'-20', MCC, FCC
01-C0520	Pipe, TELE, 6" x 5'-10', MCC, FCC
01-C0521	Pipe, TELE, 6" x 10'-20', MCC, FCC



Eliminate the tedious process of adding and taking off pipe during unloading. The telescoping aluminum straight pipe simply adjusts to the perfect length. Save time and eliminate hassles. The straight pipe design virtually eliminated pipe wear, minimized grain damage and features a leakproof telescoping seal for maximum capacity.



Agri Distributing Inc.

The aluminum straight nozzle for general unloading features a 360° handle and an adjustable air door. They come complete with a male camlock coupler for quick attachment to piping. Order with a steel bell for lasting protection of the nozzle end.



- 01-A0197 Nozzle, Straight, AL, 4" x 3', MCC
- 01-A0198 Nozzle, Straight, AL, 5" x 3', MCC
- 01-A0199 Nozzle, Straight, AL, 6" x 3', MCC



- 01-A0207 Nozzle, Straight, AL, 4" x 3', MCC, CSBELL
- 01-A0208 Nozzle, Straight, AL, 5" x 3', MCC, CSBELL
- 01-A0239 Nozzle, Straight, AL, 6" x 3', MCC, CSBELL



- 01-A0272 Nozzle, Straight, AL, 4" x 3', MCC, CUHD, SKDS
- 01-A0274 Nozzle, Straight, AL, 5" x 3', MCC, CUHD, SKDS



- 01-A0267 Head, Cleanup, GLV, 4", SKDS
- 01-A0206 Head, Cleanup, GLV, 5", SKDS
- 011647 Head, Cleanup, GLV, 6", SKDS



- 01-A0273 Nozzle, Straight, AL, 4" x 3', MCC, CUHD, SKDS, WHLS
- 01-A0292 Nozzle, Straight, AL, 5" x 3', MCC, CUHD, SKDS, WHLS
- 029935 Nozzle, Straight, AL, 6" x 3', MCC, CUHD, SKDS, WHLS



- 01-A0268 Head, Cleanup, GLV, 4", SKDS, WHLS
- 01-A0269 Head, Cleanup, GLV, 5", SKDS, WHLS
- 028978 Head, Cleanup, GLV, 6", SKDS, WHLS

KEY: AL Aluminum; MCC Male Camlock Coupler; CS Carbon Steel; CSBELL Carbon Steel Bell; OD Out-side Diameter; CUHD Cleanup Head; SKDS Skids; WHLS Wheels; GLV Galvanized



- 01-A0258 Bell, CS, 4" ID to 5" OD
- 01-A0259 Bell, CS, 5" ID to 6" OD
- 01-A0248 Bell, CS, 6" ID to 7" OD



- 013800 Nozzle, Adjustable, 5" x 3', MCC, CUHD, WHLS, HANDLE

- 023968 Head, Cleanup, GLV, 5", WHLS (FOR ADJUSTABLE NOZZLE)



COUPLERS



VAC SUPPLY

.com

Compression couplers feature a heavy rubber gasket, steel inner sleeve and bolted compression for solid connections.



Replacement Gaskets



- 04-80063 Coupler, Comp-B, 4" x 2-Bolt
- 04-80219 Coupler, Comp-B, 5" x 2-Bolt
- 04-80218 Coupler, Comp-B, 6" x 2-Bolt
- 04-80217 Coupler, Comp-B, 5" x 2-Bolt, High Temp
- 04-80216 Coupler, Comp-B, 6" x 2-Bolt, High Temp

- 20-G0028 Gasket, Coupler, COMP-B, 4" x 2 Bolt
- 20-G0025 Gasket, Coupler, COMP-B, 5" x 2 Bolt
- 20-G0024 Gasket, Coupler, COMP-B, 6" x 2 Bolt
- 20-G0023 Gasket, Coupler, COMP-B, 5" x 2 Bolt, HT
- 20-G0022 Gasket, Coupler, COMP-B, 6" x 2 Bolt, HT



- 04-80068 Coupler, Comp-B, 4" x 3-Bolt
- 04-80149 Coupler, Comp-B, 5" x 3-Bolt
- 04-80140 Coupler, Comp-B, 6" x 3-Bolt

- 20-G0029 Gasket, Coupler, COMP-B, 4" x 3 Bolt
- 20-10077 Gasket, Coupler, COMP-B, 5" x 3 Bolt
- 20-G0007 Gasket, Coupler, COMP-B, 6" x 3 Bolt



- 04-80151 Coupler, Comp-B, 4" x 4-Bolt
- 04-80079 Coupler, Comp-B, 5" x 4-Bolt
- 04-80061 Coupler, Comp-B, 6" x 4-Bolt

- 20-G0008 Gasket, Coupler, COMP-B, 4" x 4 Bolt
- 20-10305 Gasket, Coupler, COMP-B, 5" x 4 Bolt
- 20-10106 Gasket, Coupler, COMP-B, 6" x 4 Bolt

T-Type quick-on couplers are especially used in bulk handling, vacuum or pneumatic conveying lines requiring frequent access. The one-piece quick-on coupler completely eliminates tools. Each coupler comes with a gasket.



Replacement Gaskets



- 04-80062 Coupler, 4" Quick-on, T-Bolt
- 04-80059 Coupler, 5" Quick-on, T-Bolt
- 04-80011 Coupler, 6" Quick-on, T-Bolt
- 04-80009 Coupler, 8" Quick-on, T-Bolt

- 20-10036 Gasket, Coupler, COMP-T, 4"
- 20-10039 Gasket, Coupler, COMP-T, 5"
- 20-10041 Gasket, Coupler, COMP-T, 6"
- 20-10043 Gasket, Coupler, COMP-T, 8"

The quick clamp with the J-hook quickly and securely connects piping with angle flange ends with 1" - 1-1/4" lip.



Replacement Parts



- 165-0258 Clamp, 6" Quick-on, J-Clamp
- 90-1710 Clamp, 8" Quick-on, J-Clamp
- 176-1710 Clamp, 9" Quick-on, J-Clamp
- 165-1710 Clamp, 10" Quick-on, J-Clamp

- 20-10037 Handle, Coupler, Comp-T, 4", 5"
- 20-10044 Handle, Coupler, Comp-T, 6", 8"
- 90-1709 Hook, Clamp, Quick-on, J-Clamp



Agri Distributing Inc.

Camlock couplers connect in seconds and align and seal without tools - every time - saving time and reducing grain damage. No more loose clamps and bolts! Flex pipe will always be connected so that the product flows in the proper direction. With camlock couplers, flex pipe can never be hooked up the wrong direction. This improves your machine capacity and decrease pipe wear.

If you need to replace flex pipe, just remove the camlock couplers and reinstall them on you new flex pipe - saving you money!

Camlock couplers can be retrofitted to all makes and models of pneumatic conveyors. Contact us today for special pricing on complete change-overs.



- 20-10184 Gasket, Coupler, Camlock, 4"
- 20-10016 Gasket, Coupler, Camlock, 5"
- 20-G0006 Gasket, Coupler, Camlock, 6"
- 011463 Gasket, Coupler, Camlock, 6" High Temp
- 20-G0031 Gasket, Coupler, Camlock, 8"



- 026902 Screw, Hex Hd, Thread Cutting for Couplers



- 20-B0030 Handle & Pin, Coupler, Camlock, 4" 5"
- 20-F0028 Handle & Pin, Coupler, Camlock, 6"

- 02-G0044 Gasket - 6" Angle Flange, Plain
- 02-G0038 Gasket - 8" Angle Flange W/ Holes
- 02-G0061 Gasket - 9" Angle Flange W/ Holes
- 02-G0041 Gasket - 10" Angle Flange W/ Holes
- 011530 Gasket - 11" Angle Flange W/ Holes



- 01-F0007 Coupler, Camlock, 4", Female
- 01-F0023 Coupler, Camlock, 5", Female
- 01-F0002 Coupler, Camlock, 6", Female
- 01-F0051 Coupler, Camlock, 8", Female



- 013806 Coupler, Camlock, 4", Female w/Screws
- 01-F0033 Coupler, Camlock, 5", Female w/Screws
- 013807 Coupler, Camlock, 6", Female w/Screws



- 01-F0021 Coupler, Camlock, 4", Male
- 01-F0022 Coupler, Camlock, 5", Male
- 01-F0004 Coupler, Camlock, 6", Male
- 01-F0044 Coupler, Camlock, 8", Male



- 013805 Coupler, Camlock, 4", Male w/Screws
- 01-F0032 Coupler, Camlock, 5", Male w/Screws
- 01-F0050 Coupler, Camlock, 6", Male w/Screws



- 030448 Plug, 3" Alum, w/Chain
- 01-C0218 Plug, 4" Alum, w/Chain
- 01-C0219 Plug, 5" Alum, w/Chain
- 01-C0220 Plug, 6" Alum, w/Chain

- 030447 Cap, 3" Alum, w/Chain
- 01-C0221 Cap, 4" Alum, w/Chain
- 01-C0222 Cap, 5" Alum, w/Chain
- 01-C0223 Cap, 6" Alum, w/Chain

- 01-E0143 Angle Flange - 8", Plain
- 01-C0653 Angle Flange - 9", Plain
- 01-E0141 Angle Flange - 10", Plain
- 01-E0531 Angle Flange - 12", Plain

- 01-E0297 Angle Flange - 8" W/Holes
- 01-E0133 Angle Flange - 10" W/Holes

- 02-80043 Angle Flange - 6" W/Slots (6.06 I.D. for Straight Pipe)
- 94-4126 Angle Flange - 6" W/Slots (6.25 I.D. for Flex Pipe)
- 020359 Angle Flange - 11" W/Slots





Number	Description	Models
02-A0008	Boot, RUB, Discharge, 9"	560
02-A0009	Boot, RUB, Discharge, 11"	660
02-A0023	Boot, RUB, Discharge, 12"	680, 5068, 6068
04-80361	Clamp, Hose, 9" (use with 02-A0008)	560
04-80362	Clamp, Hose, 12.25 (use with 02-A0009)	660
	Clamp, Hose, (use with 02-A0023)	680, 5068, 6068

Discharge Cyclones

01-E0165	Cyclone, Discharge, 5", 1P, 20"	550, 555, 151, 1551
01-E0170	Cyclone, Discharge, 6", 1P, 20"	560, 256, 266
01-E0160	Cyclone, Discharge, 6", 1P, 24"	660
01-E0163	Cyclone, Discharge, 6", 1P, 24", Seed	
012811	Cyclone, Discharge, 6", 2P, 24", Barrel Liner	
032303	Cyclone, Discharge, 8",	680
031047	Cyclone, Discharge, 8", 2P, 24", Barrel Liner	5068, 6068



Elbow, Lower Truck Loading Kit, Elbow Only

01-C0036	Elbow, TLK Lower, 4"	440
01-C0466	Elbow, TLK Lower, 4"	1400
01-C0054	Elbow, TLK Lower, 5"	151, 155, 1550, 1555, 550, 555, 1500, 2050, 2100
01-C0151	Elbow, TLK Lower, 6"	560, 566, 660, 663, 256, 266, 466, 1560, 1566, 1660, 1663, 1561, 1661
028370	Elbow, TLK Lower, 8"	680, 5068, 6068

Elbow, Lower Truck Loading Kit, w/Female Camlock Coupler

01-C0280	Elbow, TLK Lower, 4", w/FCC	1400
01-C0058	Elbow, TLK Lower, 5", w/FCC	151, 155, 1550, 1555, 550
01-C0150	Elbow, TLK Lower, 6", w/FCC	560, 566, 660, 663, 256, 266, 466, 1560, 1566, 1660, 1663, 1561, 1661

Elbow, Upper Truck Loading Kit, Swing Elbow

01-C0200	Elbow, TLK Upper, 4"	1400
01-C0458	Elbow, TLK Upper, 4"	440
01-C0320	Elbow, TLK Upper, 5"	550, 555, 151, 155, 1550, 1555
01-C0037	Elbow, TLK Upper, 5"	1500, 2050, 2100
01-C0285	Elbow, TLK Upper, 6"	560, 566, 660, 256, 266, 1560, 1566
01-C0125	Elbow, TLK Upper, 6"	3100
036017	Elbow, TLK Upper, 8"	680
028388	Elbow, TLK Upper, 8"	5068, 6068



Gasket, Hinge, Truck Loading Kit

02-G0020	Gasket, TLK Hinge, 4"	440, 1400
011766	Gasket, TLK Hinge, 4" (White)	Chem Vac 100
02-G0008	Gasket, TLK Hinge, 5"	151, 155, 550, 555, 1550, 1555, 1051, 1500, 2050, 2100
011765	Gasket, TLK Hinge, 5" (White)	Chem Vac 100
02-80130	Gasket, TLK Hinge, 6"	256, 266, 366, 466, 560, 566, 660, 663, 1560, 1566, 1660, 1663, 1061, 1561, 3000, 3100
011645	Gasket, TLK Hinge, 6" (White)	Chem Vac 150, 200
028392	Gasket, TLK Hinge, 8"	680, 5068, 6068

Rod, Safety Latch

00-B0246	Rod, Safety Latch, 40.25" LG	550, 555, 560, Diesels
00-B0252	Rod, Safety Latch, 44.25" LG	660, 680
028068	Rod, Safety Latch, 46.25" Lg	4066, 6068
031046	Rod, Safety Latch, 56.25" Lg	5068-D, 6068-D
028300	Rod, Safety Latch, 64.25" Lg	6068 Ext
037106	Rod, Safety Latch, 74.25" Lg	6068 Diesel Ext

Latch, Adjustable Draw

00-B0254	Latch, Adjustable Draw, Yellow Handle	All
----------	---------------------------------------	-----





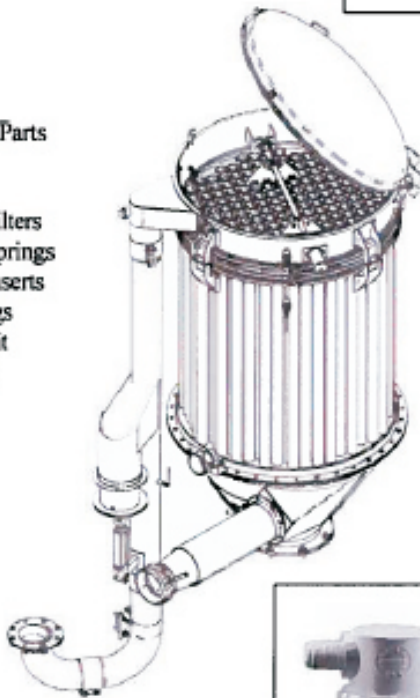
- Backup Filter Gasket, Top
- Backup Filter
- Backup Filter Screen
- Backup Filter Gasket, Bottom
- Cyclone Barrel Gasket, Segment
- Female Camlock Coupler
- Inspection Door Window Gasket Latch
- Gasket, Airlock, Top

Part No.	Description	Model
00-B0079	Clamp, Pull Action, Red Handle	All
011531	U-Bolt, Pin and Nuts for 00-B0079	
02-G0016	Gasket, Inspection Door	All, After 1989
01-E0588	Window, Inspection Door, 5.75 x 5.75 x .25 Thk	All, After 1989
02-80106	Filter, Backup	Handlair
038117	Filter, Backup	Handlair
01-C0290	Filter, Backup, 16 x 16, CS	Handlair
014494	Filter, Backup, 16 x 16, SS	Handlair
02-G0025	Gasket, Backup Filter, Bottom	Handlair
02-G0024	Gasket, Backup Filter, Top	Handlair
02-G0036	Gasket, Lid, Flange, 4 Req'd	Handlair
01-C0293	Screen, Backup Filter, 16 x 16 Mesh Only	Handlair
01-C0568	Screen, Backup Filter, 8 x 8 Mesh Only	Handlair
02-80192	Window, Inspection Door, 3 x 3 x .125 Thk	Handlair
02-G0021	Gasket, Top, .6 Airlock	See Airlock Page
02-G0002	Gasket, Top, 1.0 Airlock	See Airlock Page
02-G0065	Gasket, Top, 1.5 Airlock	See Airlock Page
02-G0013	Gasket, Top, 1.56 Airlock	See Airlock Page
02-G0052	Gasket, Top, 3.0 Airlock	See Airlock Page



Replacement Parts

- Lid Gasket
- MicroTube Filters
- MicroTube Springs
- MicroTube Inserts
- Shaker Springs
- Membrane Kit
- Inline Filters



013341	Filter, Inline, 10 Micron
034080	Filter, MicroTube, Coated w/Molded End, 48"
029776	Filter, MicroTube, Insert
027946	Filter, MicroTube, Spring
029320	Gasket, Lid, VacBoss
034706	Membrane Kit (Includes 034709 and (9) 028000)
034709	Membrane, Material Only
028000	Clamp, T-Bolt (9 Required)
027591	Spring, Extension, VacBoss Shaker

